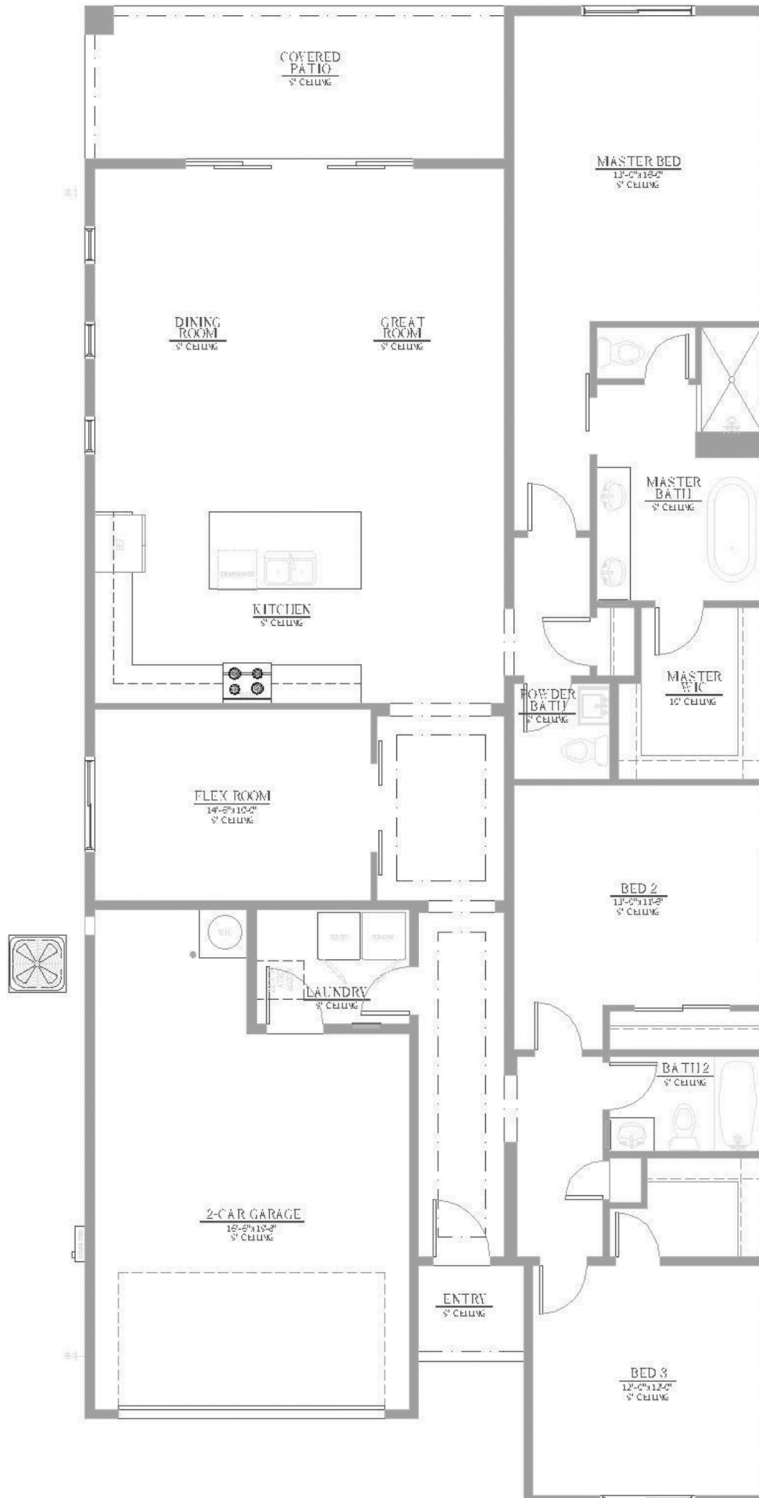


LOT # 4,5,6

SINGLE STORY - 3 BEDROOM PLUS BONUS ROOM - 2.5 BATH - OPEN FLOOR PLAN

2 CAR GARAGE - APPROX SQFT. 2,100



The floorplans and elevations of Fordel Development are copyrighted. We have enforced and will continue to vigorously enforce our federal copyrights. In a continuing effort to meet changing conditions, Fordel Development reserves the right to make or modify features, specifications and/or prices without notice or obligation. In addition special wall and window treatments, upgraded floor coverings, landscaping, custom designed walks and patio treatments, and many other items featured in and around the model homes are decorator items and may not be included in the base price. All square footage's are approximate. Renderings are artist's illustrations. See your sales representative for further details. ROC#284258